

## Installation Instruction for Transdaptor 13

For 21" whaler Transom Extension brackets

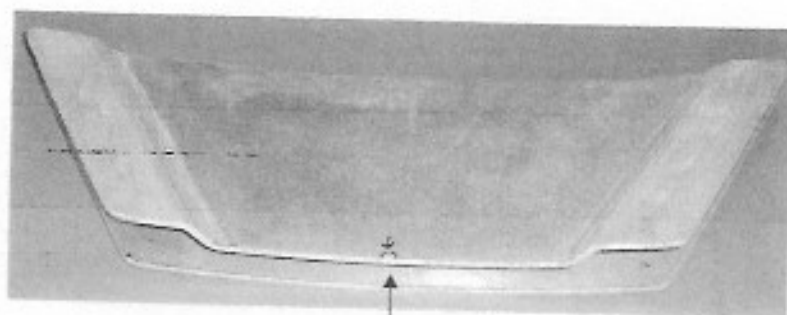
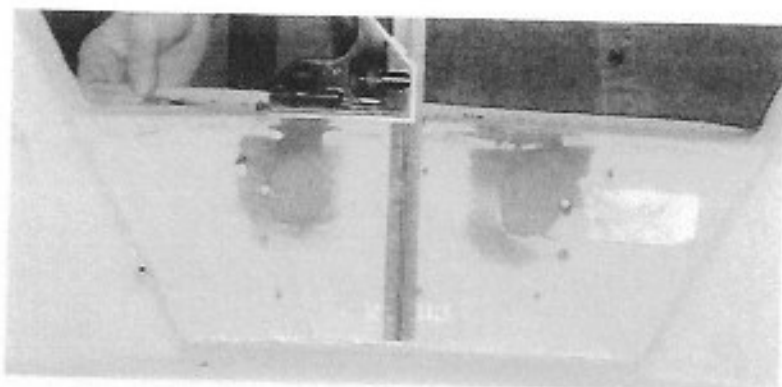
From 1959-1972 Models

- Step 1: Clean Transom with Acetone inside and out
- Step 2: Remove Ski Eyes if needed
- Step 3: On inside of Transom, measure Transom and mark center with pencil (to ensure proper alignment)
- Step 4: Silicone Bracket on contact area
- Step 5: On inside of Transom bracket, there is a center punch dot-align set with center of Transom
- Step 6: Using a soft hammer, tap bracket down evenly, and making sure center is aligned.
- Step 7: Drill thru transom and inner plate with 1 1/32 drill bit
- Step 8: Silicone around stainless steel bolts and install
- Step 9: Clean up any excess silicone with acetone and rags
- Step 10: Silicone around edges and gaps on top
- Step 11: Reinstall Ski Eyes if needed

Get Ready:

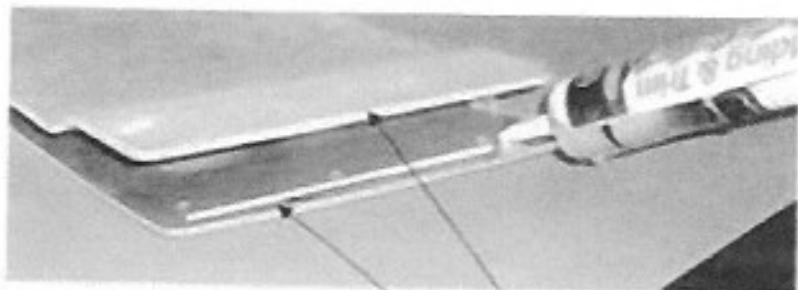
Clean transom inside and out

Locate center line on boat transom

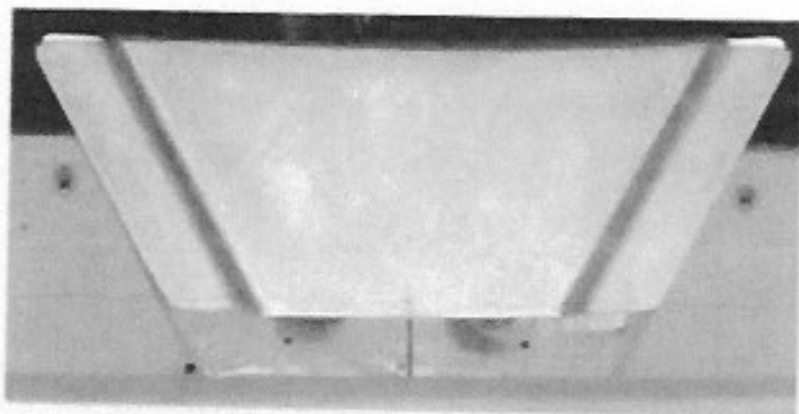


Line your Boat center line with the center line punch dot on the bracket.

Kent Fabrications  
171 Mattakeesett St Unit 8  
Pembroke, MA 02359  
(781) 659 3355

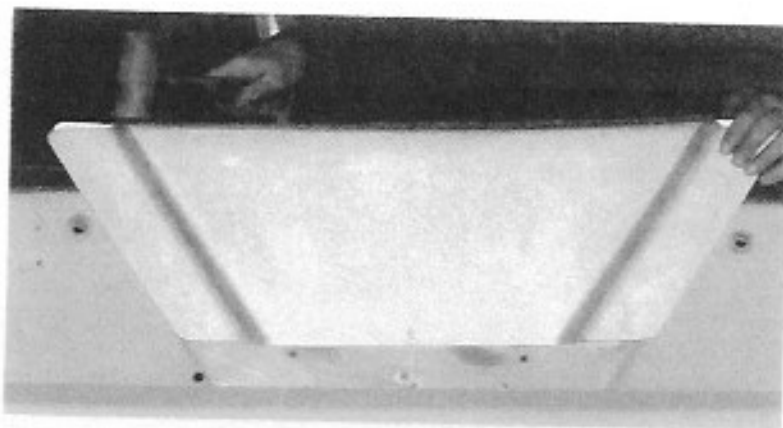


Place one straight line of Silicon Caulk inside bracket on each inside lip

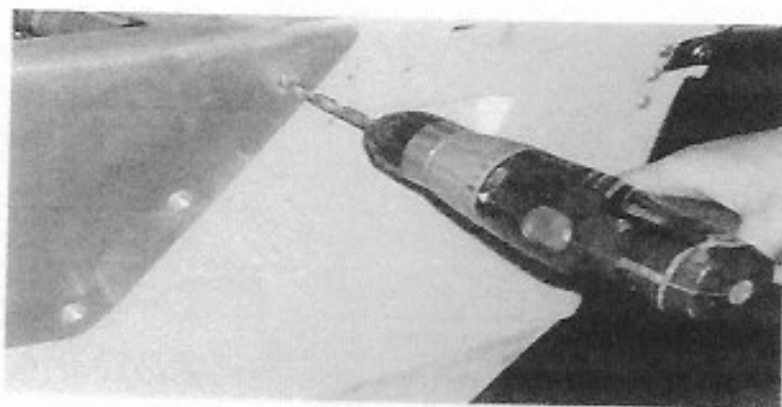


While silicon is still wet, slide on top keeping the center line lined up with punch dot on bracket

Kent Fabrications  
171 Mattakeesett St Unit 8  
Pembroke, MA 02359  
(781) 659 3355



Tap the bracket with a soft hammer. Be very careful not to scratch the finish.

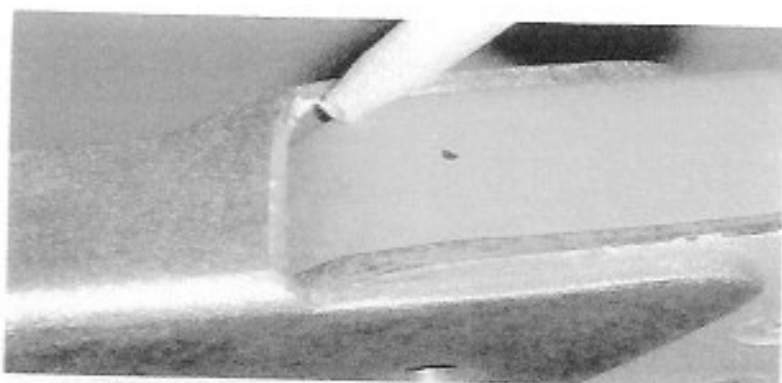


Drill 11/32

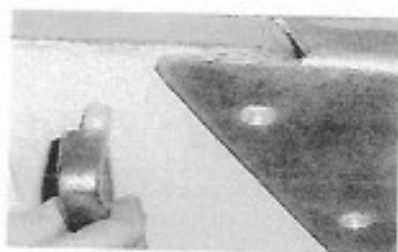
Silicon the bolts.



Kent Fabrications  
171 Mattakeesett St Unit 8  
Pembroke, MA 02359  
(781) 659 3355



Silicon all the gaps



Relocate your Ski eyes if you had them before the installation

Kent Fabrications  
171 Mattakeesett St Unit 8  
Pembroke, MA 02359  
(781) 659 3355